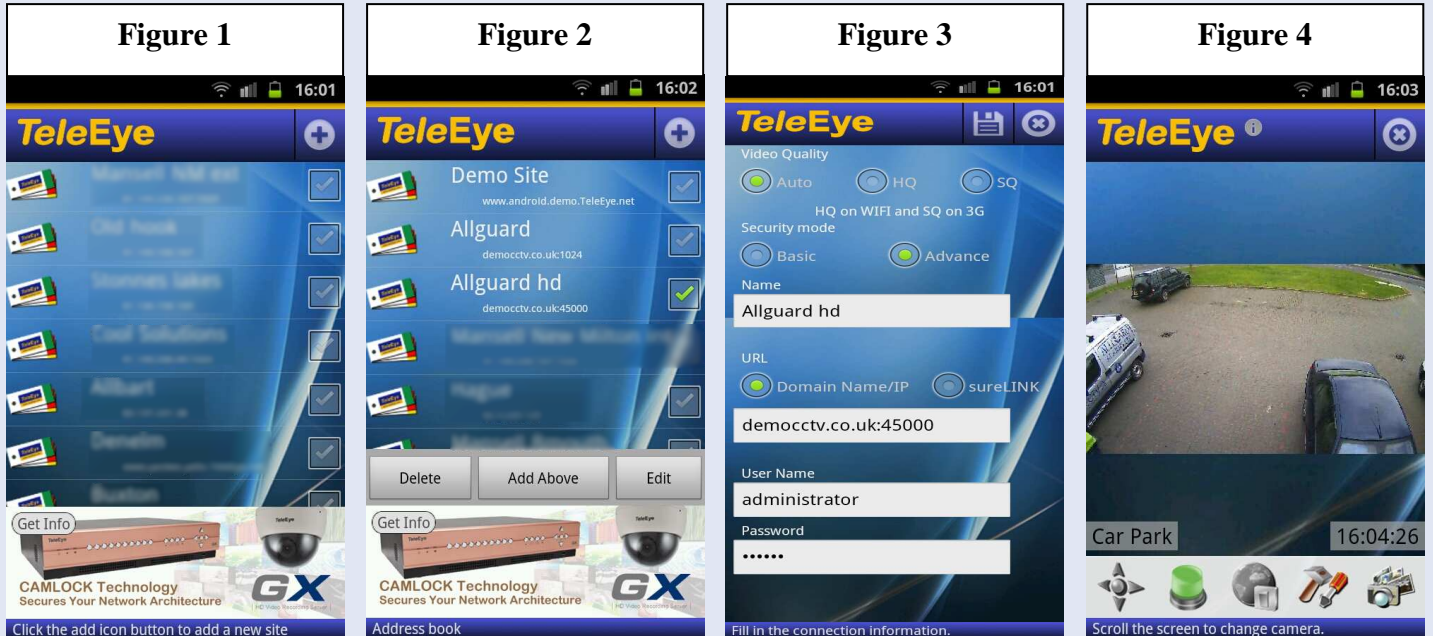


# ALLGUARD SECURITY

Units 4 & 5 Regis Business Park, Grace Road, Sheerness, Kent. ME12 1HA  
Tel: 01795 663823 www.allguardalarms.co.uk Email: office@allguardalarms.co.uk



## Connecting to an Allguard CCTV System from an Android phone or tablet.



### **Free Version**

- 1) Download the software from the Android Market Place, its called TeleEye iView Free.
- 2) Start the app and select to the right of the name Demo Site where the greyed out check box is (Fig 1). This will highlight.
- 3) Select Edit from the menu that pops up near the bottom of the screen (Fig 2)
- 4) (Fig 3) Leave video quality as it is and make sure Basic is selected in Security Mode
- 5) Enter a name for your site
- 6) Ensure Domain Name/IP is selected.
- 7) Enter the IP and port for your site in the way of xxx.xxx.xxx.xxx:1024. Call us for these details if you require them.
- 8) Different IPs will be needed if you are on the same broadband connection as our system. By default the IP is 192.168.0.2.
- 9) The port is also default which is 1024 so to enter these into the IP field you would use 192.168.0.2:1024
- 10) You will not need a username so enter the password which by default is 000000. Call us if this doesn't work.
- 11) Press the Save button at the top of Fig 3 which is indicated as a disk icon.
- 12) You are now taken back to Fig 1 so you can click on your site you have just entered, which is first one in the list and it will now connect.

**N.B. Make sure you have either a WiFi or 3G connection active or else it will fail.**

### **Paid Version**

- 1) Download the software from the Android Market Place, its called TeleEye iView (or iView HD depending on your phone or tablet)
- 2) Start the app and select the Plus icon next to the main TeleEye logo (Fig 1)
- 3) (Fig 3) Leave video quality as it is and make sure Basic is selected in Security Mode
- 4) Enter a name for your site
- 5) Ensure Domain Name/IP is selected.
- 6) Enter the IP and port for your site in the way of xxx.xxx.xxx.xxx:1024. Call us for these details if you require them.
- 7) Different IPs will be needed if you are on the same broadband connection as our system. By default the IP is 192.168.0.2.
- 8) The port is also default which is 1024 so to enter these into the IP field you would use 192.168.0.2:1024
- 9) You will not need a username so enter the password which by default is 000000. Call us if this doesn't work.
- 10) Press the Save button at the top of Fig 3 which is indicated as a disk icon.
- 11) You are now taken back to Fig 1 so you can click on your site you have just entered, it will now connect.

**N.B. Make sure you have either a WiFi or 3G connection active or else it will fail.**

**If you need further assistance please call us on 01795 663823 and ask for Gavin.**